

APPENDIX 2

GENERAL NOTES :

1. Provide the following lighting installation to ensure all public areas, including the entrance, are adequately lit in accordance with BS 5266 : Part 1 : 1988 to Building Control and Fire Officers recommendations. Refer to the following notes for details of the lighting installation. All areas of the building must be covered by the lighting installation. The lighting installation must be designed to provide a minimum of 100 lux at the working plane. The lighting installation must be designed to provide a minimum of 100 lux at the working plane. The lighting installation must be designed to provide a minimum of 100 lux at the working plane.
2. Provide the following fire alarm system throughout, including the entrance, in accordance with BS 5839 : Part 1 : 1988 to Building Control and Fire Officers recommendations. The fire alarm system must be designed to provide a minimum of 100 lux at the working plane. The fire alarm system must be designed to provide a minimum of 100 lux at the working plane. The fire alarm system must be designed to provide a minimum of 100 lux at the working plane.
3. Provide the following fire extinguisher installation throughout, including the entrance, in accordance with BS 5839 : Part 1 : 1988 to Building Control and Fire Officers recommendations. The fire extinguisher installation must be designed to provide a minimum of 100 lux at the working plane. The fire extinguisher installation must be designed to provide a minimum of 100 lux at the working plane. The fire extinguisher installation must be designed to provide a minimum of 100 lux at the working plane.
4. All electrical wiring / cabling and equipment must be installed in accordance with BS 7671 : 2018 to Building Control and Fire Officers recommendations. The electrical wiring / cabling and equipment must be designed to provide a minimum of 100 lux at the working plane. The electrical wiring / cabling and equipment must be designed to provide a minimum of 100 lux at the working plane. The electrical wiring / cabling and equipment must be designed to provide a minimum of 100 lux at the working plane.
5. All electrical wiring / cabling and equipment must be installed in accordance with BS 7671 : 2018 to Building Control and Fire Officers recommendations. The electrical wiring / cabling and equipment must be designed to provide a minimum of 100 lux at the working plane. The electrical wiring / cabling and equipment must be designed to provide a minimum of 100 lux at the working plane. The electrical wiring / cabling and equipment must be designed to provide a minimum of 100 lux at the working plane.
6. Means of escape to comply with Building Control / Fire Officers recommendations.
7. All doors must be FD30S to be 1/2 hour fire resistant construction and must be equipped with smoke seals and intumescent strips and self-closing devices. Any glazing to be in 1/2 hour resistant construction.
8. All doors must be FD30S to be 1/2 hour fire resistant construction and must be equipped with smoke seals and intumescent strips and self-closing devices. Any glazing to be in 1/2 hour resistant construction.
9. Provide fire signs and notices as required by Building Control / Fire Officers.
10. Upgrade electrical power / lighting circuits to current IEE regulations with IPCCS certificates should this be required.

FD30S

1/2 hour fire resistant door with intumescent strips, smoke seals and self-closing devices.

FD80S

1 hour fire resistant door with intumescent strips, smoke seals and self-closing devices.



Areas to be covered by emergency lighting.



Emergency exit sign.



Emergency exit sign.



Emergency exit sign.



Emergency exit sign.



Emergency exit sign.



Emergency exit sign.



Emergency exit sign.



Emergency exit sign.



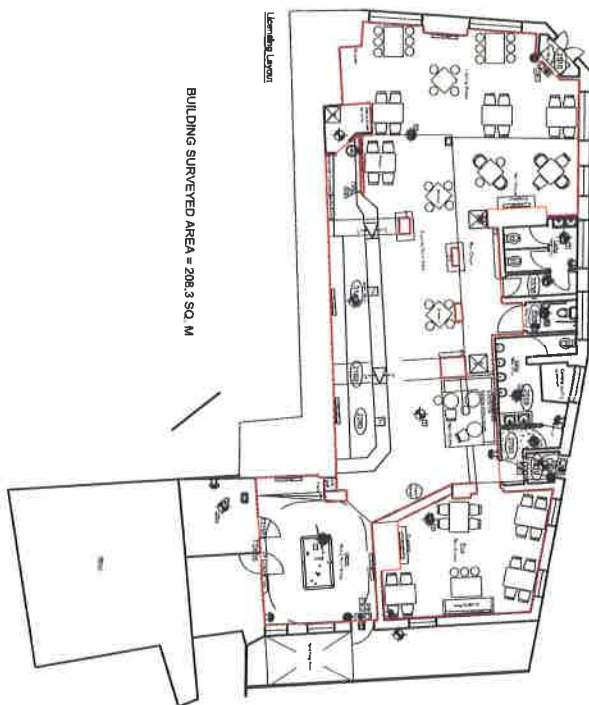
Emergency exit sign.



Emergency exit sign.



Emergency exit sign.



BUILDING SURVEYED AREA = 208.3 SQ. M

Licensing Layout

NORTH TYNESIDE COUNCIL
LICENSING SECTION

25 OCT 2016

APPROVED

Copyright.
This drawing and design and all the information contained therein is the sole copyright of Nanu Soda Ltd, and reproduction in any form is forbidden unless permission is obtained in writing.

No dimensions to be scaled from this drawing. All Contractors must visit site and be responsible for taking and checking all dimensions relative to this work. The Designer must be advised of any discrepancies in writing.

Revision:
Rev:A: External area denoted. 21.10.16 SJO

Scale:
1:100
Date:
OCT 16
Drawn to:
LM

Job title:
The Fat Ox
278 Whitley Road
Whitley Bay, NE26 2TG
Drawing title:
Licensing Layout
Drawing number:
426-L1'A'

The Fat Ox - Nanu Soda Ltd
2780 2780A - Licensing Layout

NANU
SODA